

CSH Example: Sexual & Reproductive Health

Below are some best practice examples of the health professional's role¹ in supporting sexual & reproductive health through a CSH lens. These examples present some potential actions in each pillar and should be considered within your capacity and role within your health authority. You can use these as a guide, or insert your own to best suit the unique needs of your setting.

- Collaborate with the school district to ensure policies reflect best practice
- Encourage and participate in school/district health committees inclusive of sexual & reproductive health
- Support and advocate for the development of policies that promote safety, inclusivity, and respect for diversity

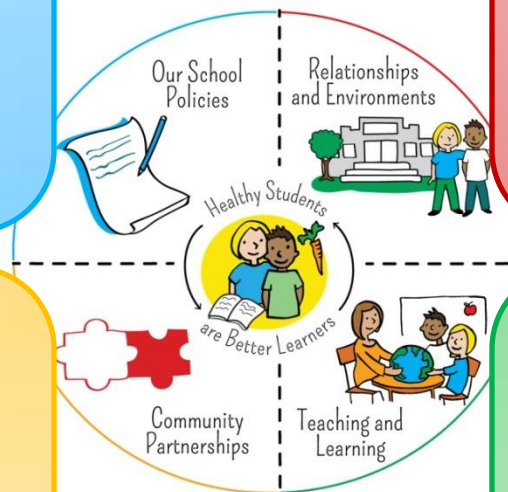
AND/OR

- _____

- Provide and interpret sexual health information and resources to parents (eg: through parent events or newsletters)
- Encourage parent/community participation on school/district committees related to sexual & reproductive health
- Facilitate linkages to community resources and supports such as clinical, counseling, and social services²

AND/OR

- _____



- Support activities that promote safety, inclusivity, and respect for diverse student groups within the school setting
- Encourage culturally sensitive and age-appropriate approaches to sexual & reproductive health programs
- Encourage student involvement in program development and delivery

AND/OR

- _____

- Provide inservices to support teacher knowledge and skill development
- Share and interpret current local data and information on sexual health status, determinants, behaviours, attitudes, skills, knowledge, trends and emerging issues
- Encourage cross-curricular learning opportunities
- Provide and link the school/district to evidence-based programs, approaches and resources²

AND/OR

- _____